

6.12 Ethernet Adapter (L95-Z318, L45-Z318, L50-Z318, LMG-Z318)

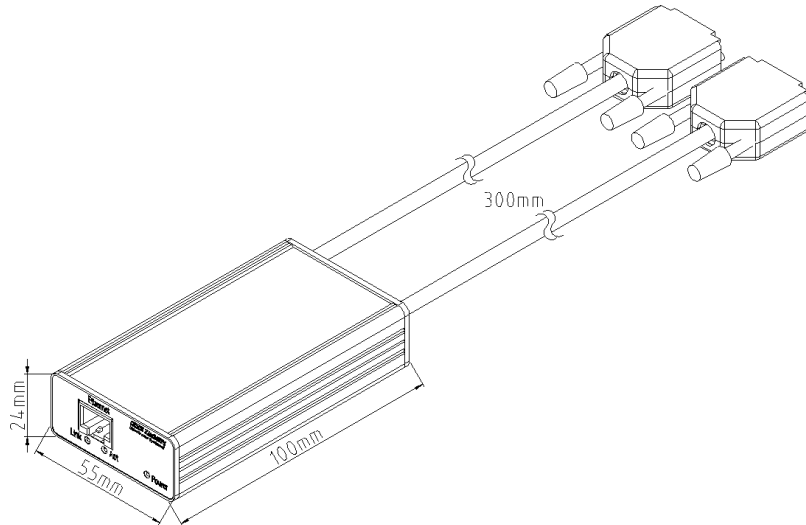


Figure 89: L95-Z318, L45-Z318, L50-Z318 - supply via LMG



Figure 90: LMG-Z318 - external supply via wall wart

This LAN adapter Z318 is useful for the communication with a power meter LMG located anywhere in a local area network LAN via a virtual COM port simulation. The communication is transmitted by the driver over LAN to the LMG for user purposes in the same way as e.g. the direct connection of PC/COM1 to LMG/COMa. The power meter LMG will be accessible via this virtual COM port.

6.12.1 System requirements, hardware specifications

- Windows XP home or professional
- Auto-sensing 10/100 Mbit/s Ethernet
- Throughput up to 230.400 baud

6.12.2 Connection of the adapter L95-Z318 with LMG95

- Plug the connector of L95-Z318 labeled with „to LMG’s COM B conn.“ to the LMG95 COM B jack.
- Plug the connector of L95-Z318 labeled with „supply“ to the LMG95 auxiliary transducer supply jack, if your application uses the supply jack e.g. for PSU600, then use LMG-Z318 with external supply via wall wart.
- Switch on the power meter and connect the LAN cable.

6.12.3 Connection of the adapter L45-Z318 with LMG450

- Plug the connector of L45-Z318 labeled with „to LMG’s COM B conn.“ to the LMG450 COM B jack.
- Plug the connector of L45-Z318 labeled with „supply“ to one of the LMG450 current clamp 1/2/3/4 jacks whichever is free, if your application uses four current sensors, then use LMG-Z318 with external supply via wall wart.
- Switch on the power meter and connect the LAN cable.

6.12.4 Connection of the adapter L50-Z318 with LMG500

- Plug the connector of L50-Z318 labeled with „to LMG’s COM B conn.“ to the LMG500 COM B jack.
- Plug the connector of L50-Z318 labeled with „supply“ to one of the LMG500 sensor ID jacks whichever is free.
- Switch on the power meter and connect the LAN cable.

6.12.5 Connection of the adapter LMG-Z318 with any LMGxx

- Connect the DSUB9 jack of LMG-Z318 with a 1:1 serial connection cable to LMGs COMa.
- Connect the wall wart with power input of LMG-Z318.
- Switch on the power meter and connect the LAN cable.

6.12.6 Configure the LAN connection with the device setup wizard

- You will find the setup wizard on the ZES support CD under driver\z318 or on the webpage <http://www.zes.com>. If you get the drivers zip file via email, unzip and start 40002319_L.exe.

Press weiter/next, the wizard try to find the ethernet adapter. If it will not be found, press reset for about 3 seconds at the backside of the ethernet adapterbox to remove possible given prior IP address and wait for about 1 minute before searching again.



Figure 91

This is the most important point in the installation. If the wizard still can not find the Z318 in your LAN, please ask your system administrator before you contact the support hotline of ZES. The support engineers of ZES will need a lot of detailed information about your local network to consult.

- If the wizard found one or more devices choose the appropriate one and press weiter/next.
- Next window: choose 'obtain IP settings automatically using DHCP', you can also set the IP settings manually, but you should know about, to do this.
- Press weiter/next several times, until the wizard ends successfully.



Figure 92

- Please note the assigned IP address displayed in the last screen (in this example: 192.168.2.45)

6.12.7 Install 'real port driver' (virtual COM)

- Start the setup for the real port driver, you will find it on the ZES support CD under driver\z318 or on the webpage <http://www.zes.com>. If you get the drivers zip file via email, unzip and start setup.exe.
- Select: 'add a new device'. It might be necessary to remove previous installed drivers with 'remove an existing device'.
- Select the device ..



Figure 93

- .. and assign a virtual COM port:



Figure 94

The power meter LMG is now accessible via this virtual COM port.

6.12.8 Configuration and Management by web interface

- Start your Browser and login to the IP address obtained to your LAN adapter Z318 <http://192.168.x.xx/login.htm> with the username 'root' and the password 'dbps':

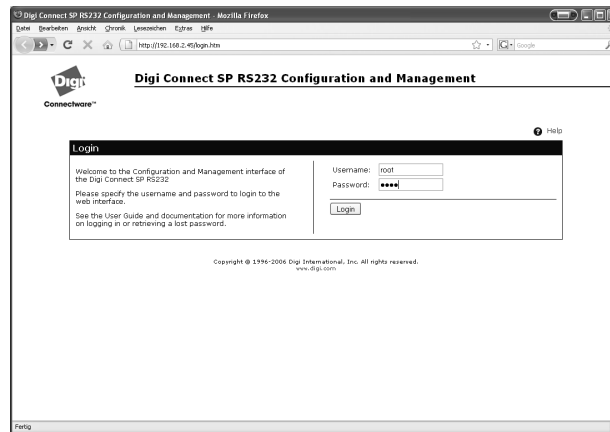


Figure 95

- Here you can manage the settings in a comfortable way: e.g. check MAC Address, IP Address, firmware update and so on.

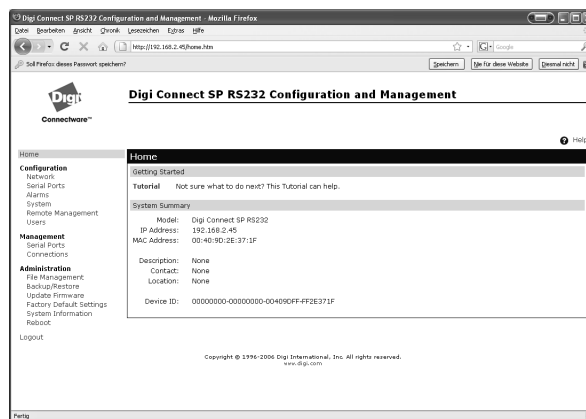


Figure 96